

Factory direct sale small truck mounted crane with hydraulic arm for sale



辰远专汽
CHENYUAN-AUTO

www.chinacysalestruck.com



(0086) 18808666258



steven@chinacysalestruck.com



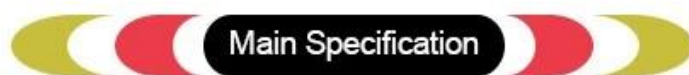






Advantage of Our [Crane Mounted Truck](#)

1. We have adopted the advanced technology of numerical-controlled plasma incision and conduct sophisticated processing of the truck parts.
2. The boring-milling process enables a higher concentricity of the parts and extends its life spans.
3. The invisible H-shaped outriggers, the double horizontal outriggers and the vertical outriggers at the back integrately enable [a wider expansion and more safety](#).
4. The material of our splices comes from the USA with a oil tube which have better leakproofness, oxidation resistance and incorruptiblenesses.
5. We independently developed the motor hydraulic station of truck's cranes which strengthens the driving force, enables stable operation and energy conservation.



Main Technical Parameter			
Product Name	FONTON Truck Mounted Mobile Crane	Overall Dimension(mm)	7990×2490×3500
Carriage inner size (L*W*H)(mm)	4800×2300×520	Curb Weight (kg)	Approx 7760
Wheelbase (mm)	4500	Number of Axles	3
Appr/Dep Angle(°)	28/23	Max Speed(km/h)	80
Cab Allowed Persons	3	Cab type	One and half row, flat proof
Chassis Technical Parameter			
Chassis Model	BJ1122V5PDB-A1	Chassis Manufacturer	Beijing FONTON Automobile Co., Ltd
Gear Box	5 speed forward and 1 reverse	Transmission type	Manual
Steering Type	LHD	Brake System	air brake
Leaf Spring No.	10/11+9	Number of Tire	6 with a spare
Drive Type	4x2	Tire Spec.	9.00-20 14PR,9.00R20 14PR
Engine Technical Parameter			
Engine Model	YC4E135-33	Engine Brand	Guangxi YuChai Machinery Co., Ltd
Fuel Type	Diesel	Emission Standard	Euro 3
Displacement (ml)	4260	Power (KW)	100(135hp)
Superstructure Parameter			
Crane brand	XCMG	Crane model	SQ6.3SK2Q
Max lift quality(kg)	6300kg	Crane type	straight arm 3 arms
Max. Operating radius(m)	9	Max Lifting Moment(T.M)	15.75
Span of Supporting Legs(m)	5.6m (H -type front support leg)	Max. Lifting Height(m)	11
RotationAngle Range	±360° rotation	Material of compartment	Carbon Steel
Warranty	One year from the date of supply		



吊臂界面采用加强钢板，且8吨以上吊机采用U型臂，可以提高截面抗弯能力！

THE BOOM INTERFACE WITH REINFORCED STEEL PLATE, AND ABOVE 8 TONS CRANE USE U-TYPE BOOM WITH POWERFUL BENDING RESISTANCE.

液压绞车依靠碟簧和摩擦片制动，效率高且噪音低，发热量小，耐用！！

HYDRAULIC WINCH RELIES ON DISC SPRING AND FRICTION PLATE TO BRAKE, HIGH EFFICIENCY, LOW NOISE AND LOW HEAT GRNERATION;



下降过程中依靠液压平衡阀平衡重物，产品的可靠性极高！

RELYING ON HYDRAULIC BALANCE VALVE TO BALANCE HEAVY OBJECTS DURING THE DESCENDING PROCESS GREATLY IMPROVING PRODUCT RELIABILITY.

6.3 吨 以上吊机均采用方厢支腿，能更有效的保护油缸。

ABOUT 6.3T CRANE USE SQUARE LEGS CAN PROTECT THE CYLINDER MORE EFFECTIVELY.

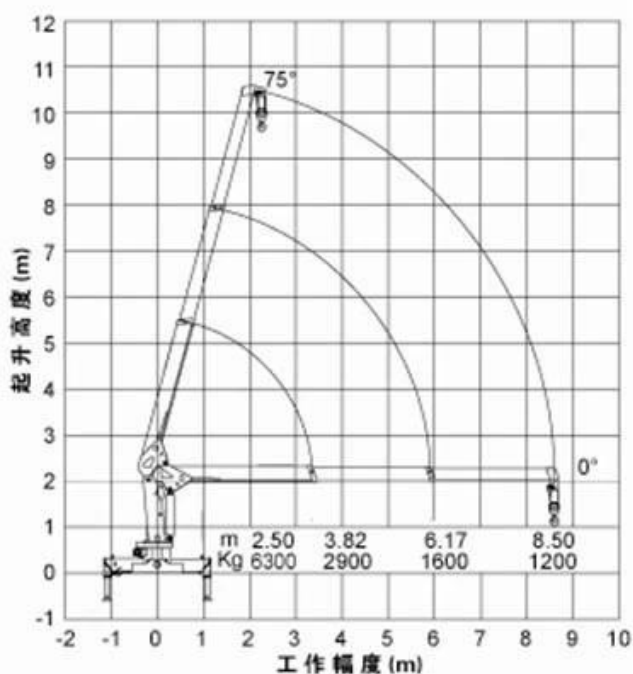
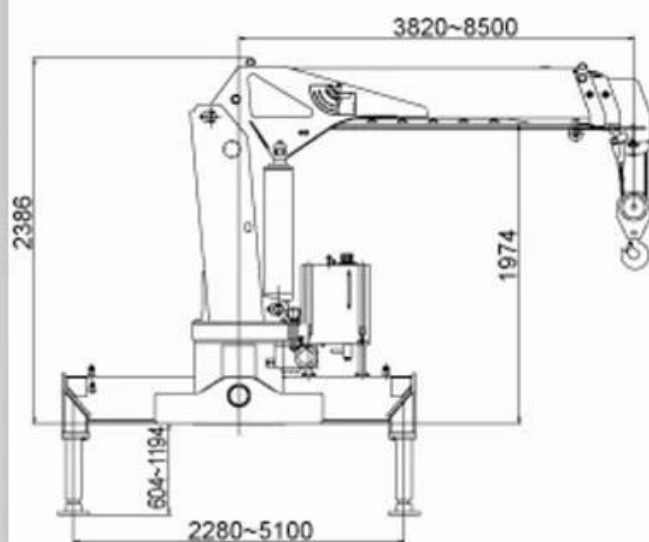
水性油漆，更加环保。

WATER-BASED PAINT, MORE ENVIRONMENTALLY FRIENDLY.

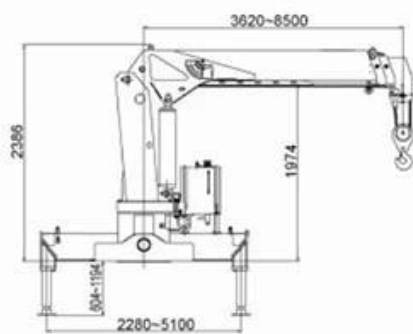
Crane Specification

Crane model	Max Lifting quality	Max Lifting Moment	Recommended Power	H-System Max Flow Rate	H-System Rated Pressure	Oil Tank Volume	Rotation Angle	Crane Dead Weight	Install Space
SQ6.3SK2Q	6300KG	15.7 T.M	20 KW	40 L/MIN	20MPA	90 L	Full Gyration	2117 KG	900 MM

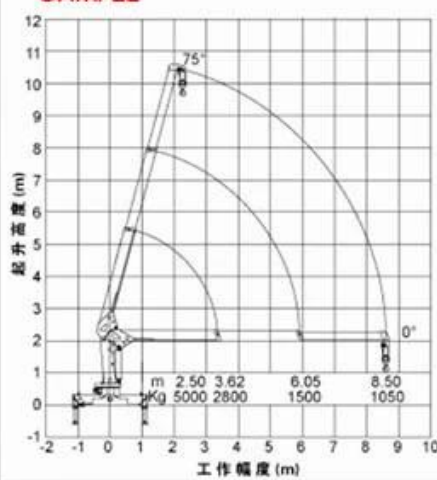
SQ6.3SK2Q



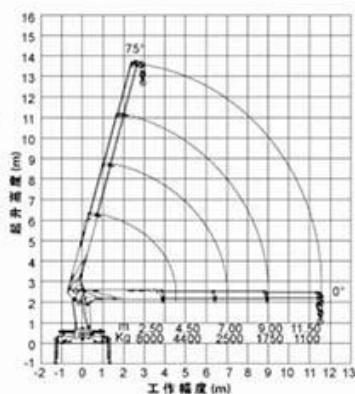
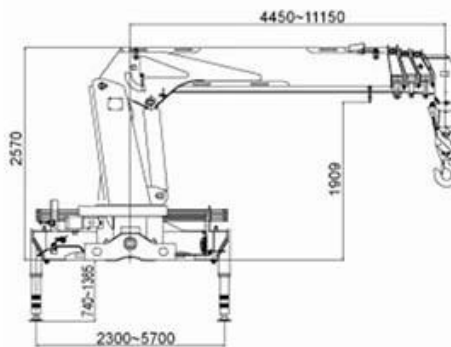
SQ5SK2Q



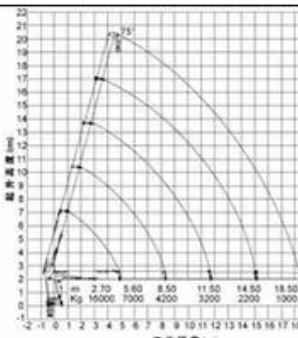
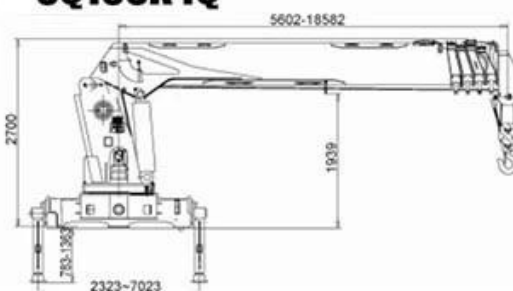
**STRAIGHT ARM WITH CRANE
SAMPLE**



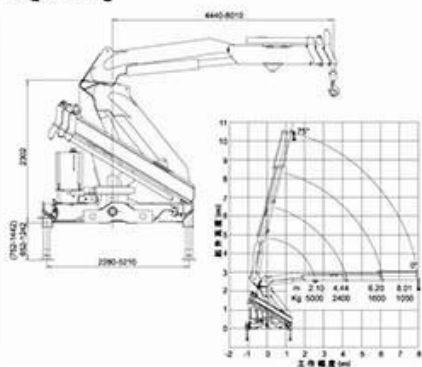
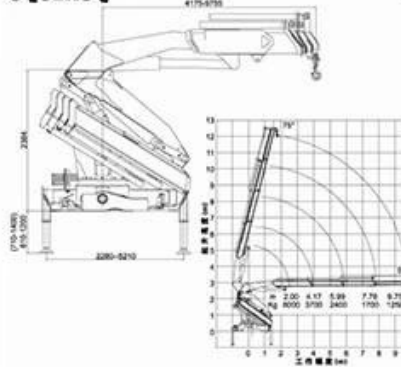
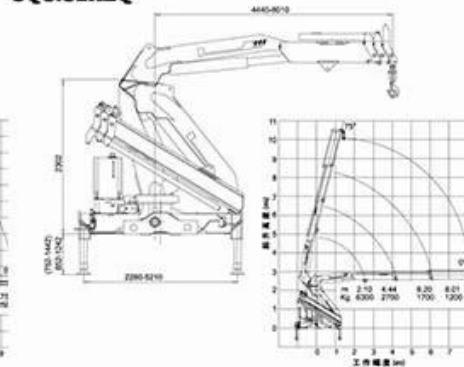
SQ8SK3Q



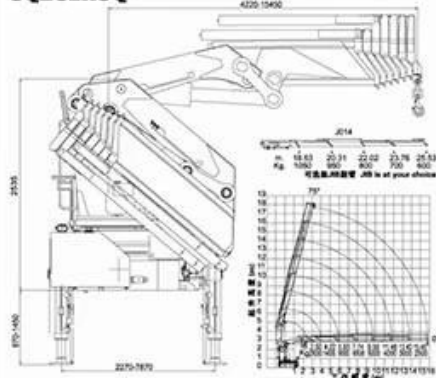
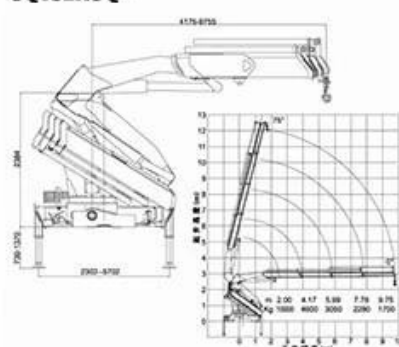
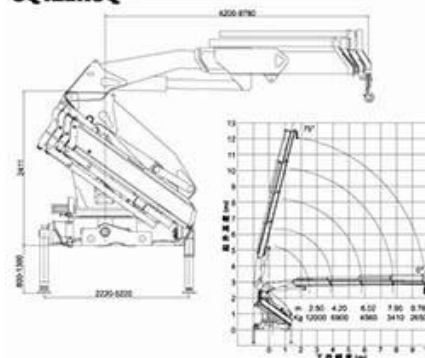
SQ16SK4Q



As per a different requires from our customers, we will recommend a suitable type as refering in the selected truck, about the crane weight, we have many chooses, such as Straight arm: SQ2SK1Q/ SQ2SK2Q/SQ3.2SK1Q/SQ3.2SK2Q/SQ4SK3Q/SQ5SK2Q/SQ5SK3Q/SQ6.3SK3Q /SQ8SK3Q/SQ10SK3Q/SQ12SK3Q/SQ14SK4Q/SQ16SK5Q/SQ25SK2Q and so on.

SQ5ZK2Q**SQ8ZK3Q****SQ6.3ZK2Q**

**FOLDING ARM WITH CRANE
SAMPLE**

SQ25ZK6Q**SQ10ZK3Q****SQ12ZK3Q**

As per a different requires from our customers, we will recommend a suitable type as refering in the selected truck, about the crane weight, we have many chooses, such as Folding arm: SQ5ZK2Q/ SQ5ZK3Q/ SQ6.3ZK2Q/ SQ6.3ZK3Q/ SQ8ZK3Q/ SQ10ZK3Q/ SQ12ZK3Q/ SQ14ZK3Q/ SQ16ZK4Q/ SQ25ZK6Q and so on.

OPTIONAL ACCESSORIES



REMOTE CONTROL



BASKET



TOP SEAT



AUGER DRILL



REAR OUTRIGGER



MOMENT LIMITED VALVE



GRAPPLE



GRAPPLE



GRAPPLE



FACTORY OVERVIEW







1. Q: How long is the warranty period?

A: All of our trucks have one year warranty or 25000KM since you get the truck.

2. Q: What's the main market of your company?

A: We have customers all over the world and our main market is Africa, all the individuals and units are my partners who have a demand of China's high quality automobile industry product.

3. Q: How much the production capacity and supply capacity of your factory for one year?

A: This depends on your needs. 10 years of spare parts sales experience makes us have a smooth supply channels.

4. Q: Where is your factory located?

A: Our company is located in Suizhou City, Hubei Province, the Capital of Special Purpose Vehicle in China. Warmly welcome to our factory.

5. Q: The reason why you chose our company?

A: We have the abundant resources supply, professional quality inspection engineers, excellent service team, we will integrate all resources for your needs, let you experience the more cost-effective and more convenient "one-stop" procurement services, effectively reduce the purchasing cost.





OUR MARKET



CLIENTS INVISTING



CONTACT US

Steven.wang



Tel:+86 722 3229822



Mobile:++86 18808666258



Email: steven@chinacyalestruck.com



Skype:Truck_chengli



Whatsap:+86 18808666258



Web: www.chinacysalestruck.com



if you want to know me,
please use your phone to
scan above QR code