

Dongfeng 6x4 drive used china dump truck with 20 tons for sale









Summary

Hydraulic dumping mechanism mainly consists of pneumatic control valve, power take-off, gear pump drive shaft, gear pump, etc.

Pneumatic control lifting valve, hydraulic cylinder, hydraulic oil tank, hydraulic pipeline, limit valve and other components. The power of the engine is output from the power take-off on the transmission, and the gear pump is driven by the transmission shaft, and the hydraulic pressure is driven by the transmission shaft. The oil is pressed into the hydraulic cylinder through the gear pump, thus pushing the piston of the hydraulic cylinder to lift the carriage. The role of hydraulic oil The piston of the lower hydraulic cylinder will continue to rise. When the hydraulic system is restricted to return oil, the piston will no longer continue to rise.

At this time, the carriage is at the angle of maximum lifting angle.

Pr-Specification

Main specifications			
Product model□name	Dump truck		
Gross weight(Kg)	25000	Driving type	6 x 4
Loading capacity (Tons)	Around 20-25	Overall dimension (mm)	8748X2495X3100
Curb weight(Kg)	12495	Overall dimension (mm)	5400X2300X1200
Front/rear hang(mm)	1245/2670	Steering wheel	Left hand drive
Cab seats (man)	3	Wheelbase (mm)	4350+1300
Approach/departure angle (°)	28/15°	Max speed(Km/h)	85
Chassis specifications			
Chassis model	EQ5253GFJ2	Manufacture	Dongfeng Motor Corporation
Brand name	DongFeng brand	Overall dimension (mm)	8565x2470x2850
Tire specification	10.00-20(nylon tire)	Tires No.	10+1
Steel spring number	9/10	Front track(mm)	1940
Fuel type	Diesel(200L)	Rear track(mm)	1860
Emission standard	Euro 3	Transmissions	8 speed forward and 1 reverse.
Cab	A row and a half deluxe cab(with sleeping berth),allowable 3 passengers		
Engine Information	Model	YC6A260-33	
	Power/ Displacement	191/7255 Kw/ml	
	Max.torque	960N.m	
	Manufacturer	Guangxi Yuchai Machinery Limited by Share Ltd	
Dump truck structure parameters			
Van body dimensions	5400X2300X1200	Side wall	6 mm
Bottom plate	8mm	Van body material	Common steel
Lifting position	Middle	Dumping direction	Rear
Oil Cylinder	Domestic 220	Color and Logo	Optional
Standard configuration	364 chassis,sub frame,van body side 6mm bottom 8mm,domestic middle lifting hydraulic cylinder 220,common steel,four longitudinal beams,rectangular van body,single door		

Dump truck feature

□. Dump truck is also called tipper and engineering truck.It is made up of auto chassis, hydraulic lifting mechanism,take power device and cargo body.

□. In the civil engineering,it is often used to joint excavator, loader, belt conveyor etc. to operate to form the production line of loading,transport and unloading.It is used for loading and unloading transportation for earthwork,sandstone and loose materials.

□. As the loading van can unload automatically by tilting the angle,it can save the unloading time and labor, shorten the delivery cycle, improve production efficiency and reduce the transportation cost,so that it is common transportation machinery to be used.

FACTORY OVERVIEW



CERTIFICATES



CNAS CERTIFICATE

IAF CERTIFICATE

ISO14001 CERTIFICATE

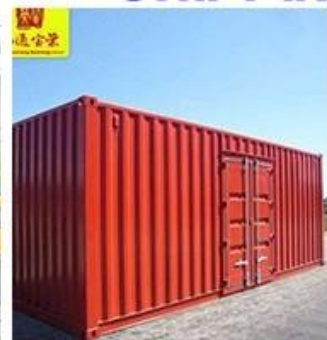
CCC CERTIFICATE

GOST CERTIFICATE

SHIPPING WAYS



BY 20GP CONTAINER



BY 40HQ CONTAINER



BY 40 OT CONTAINER



BY FRAME

Why choose us?

1. Q: How long is the warranty period?

A: All of our trucks have one year warranty or 25000KM since you get the truck.

2. Q: What's the main market of your company?

A: We have customers all over the world. And our main market is Africa. All the individuals and units are my partners who have a demand of China's high quality automobile industry product.

3. Q: How much the production capacity and supply capacity of your factory for one year?

4. A: This depends on your needs. 10 years of spare parts sales experience makes us have a smooth supply channels.

5. Q: Where is your factory located?

A: Our company is located in Suizhou City, Hubei Province, the Capital of Special Purpose Vehicle in China. Warmly welcome to our factory.

6. Q: The reason why you chose our company?

A: We have the abundant resources supply, professional quality inspection engineers, excellent service team, we will integrate all resources for your needs, let you experience the more cost-effective and more convenient "one-stop" procurement services, effectively reduce the purchasing cost.