

**4x2 new mobile food trucks in fruit truck with cheaper price**

# **MOBILE SALES SHOP**

**Manufacture's direct selling  
in order to save costs for our customers**

**Keep a good quality and create a good comfortable outdoor sales window**



辰远专汽  
CHENYUAN-AUTO

[www.chinacysalestruck.com](http://www.chinacysalestruck.com)



(0086) 18808666258



[steven@chinacysalestruck.com](mailto:steven@chinacysalestruck.com)









## Main Specification

|                                  |   |                      |                      |
|----------------------------------|---|----------------------|----------------------|
| □ Main Technical Parameters □    |   |                      |                      |
| Production name                  | BJ1036V5JV5-D1 Mobile Food Truck        |                      |                      |
| GVW(kg)                          | 2550                                    | Rated weight (Kg)    | 860                  |
| Curb weight (kg)                 | 1560                                    | Cab seats (man)      | 2                    |
| Overall dimensions(mm)           | 5130×1780×2630                          | Cabinet size(mm)     | 3000*1780*1810       |
| Approach / departure angle(°)    | 39/20                                   | F/R overhang(mm)     | 605/1055             |
| Number of axles                  | 2                                       | Wheel base(mm)       | 3070                 |
| Axle-load(Kg)                    | 700/1850                                | Max speed(Km/h)      | 115                  |
| □ Chassis Technical Parameters □ |   |                      |                      |
| Chassis model                    | BJ1036V5JV5-D1                          |                      |                      |
| Brand                            | FOTON                                   | Manufacturer         | Foton motor co., LTD |
| Tire specification               | 175R14LT 8PR                            | Number of tire       | 4                    |
| Front track base(mm)             | 1338                                    | Rear track base(mm)  | 1375                 |
| Fuel Type                        | gasoline                                | Emission standard    | Euro V               |
| Gearbox                          | 5 forward gears and 1reverse            |                      |                      |
| Cab                              | Single row, left steering wheel         |                      |                      |
| Engine's Technical Parameters    | Engine model: LJ469Q-1AE9               |                      |                      |
|                                  | Engine Manufacturer                     | Foton motor co., LTD |                      |
|                                  | Displacement (ml)                       | 1249                 |                      |
|                                  | Max power(Kw)                           | 64                   |                      |
|                                  | Maximum torque/<br>Maximum torque speed | 118N.m/ 6000rpm      |                      |



## Food truck description

Standard Configuration: The food truck external surface body is fiberglass steel, intermediate interlayer for heat insulation and fire insulation layer, and the internal surface is stainless steel; The left and right side and the backside can be expanded and there is vending bar on both left and right side. The internal compartment is installed with LED floodlights, megaphone, master switch, USB interface, large space locker; The outside of the compartment is installed with two loudspeakers, 105A storage battery, 220V external power supply interface, 15m external power supply cord, telescopic truck pedal; Different truck colors and skin stickers are optional.

Food truck optional equipments description:

Optional Configuration: Internal compartment equipment can be customised according to user's requirements such as generator/freezer/cold drink machine/vending bar/cooker etc; The left and right side of the compartment body can be choosed different structure forms of side panel; The selling window can be also opened on any side of the truck body according to customer demand, the below board can be unfold to extend the cargo area in vending operation; The glass sliding window can be also choosed on both side of the compartment body. The back door of the compartment can choose single open door, double flat open door or lift-up door. Both sides and back of the compartment can be optional advertising glass roller light box or LED screen. Truck roof can choose overhead air conditioning, baggage holder, left and right side can be choosed awning, the back side of the truck can be choosed crawling ladder.







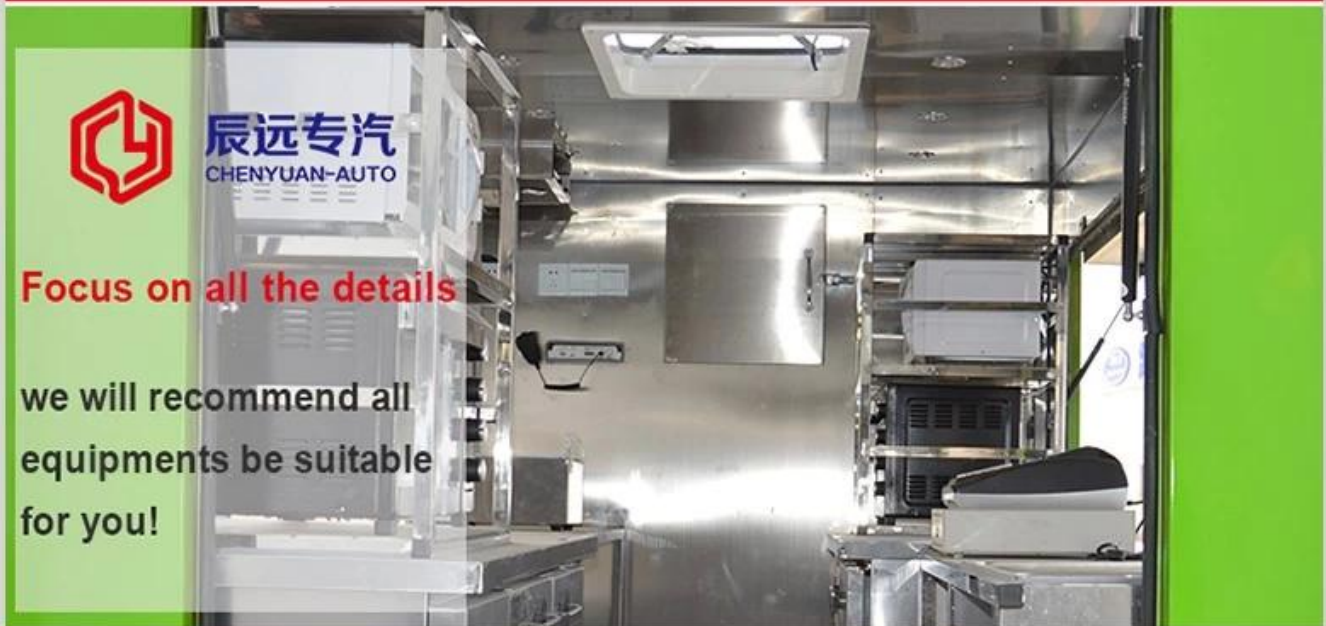
# INNER EQUIPMENT' DETAILS



辰远专汽  
CHENYUAN-AUTO

Focus on all the details

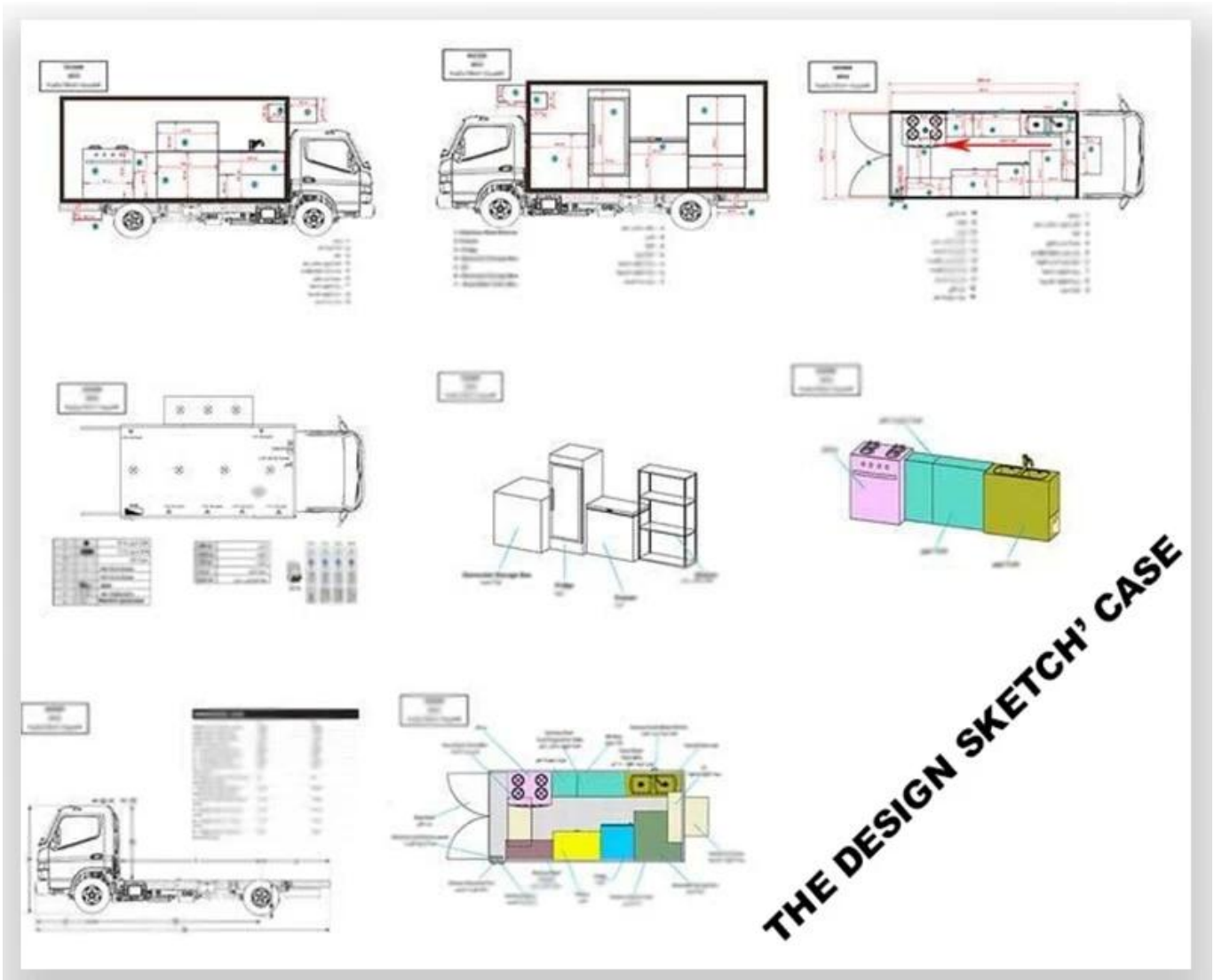
we will recommend all equipments be suitable for you!



## Summary:

- selling snacks, as a fast food cart which you can make and sell fast food
- kitchen cart which you can make food for yourself
- shop which you can sell phone card and phone
- aid post which you can help everyone
- book store which you can sell newspaper, magazine etc
- housing when you have a trip by car or jeep
- repair shop to main for your clients
- empty cart which do it by yourself





|  |   |   |
|--|---|---|
|  <p>More</p>  |  <p>More</p>   |  <p>More</p>   |
| <p><b>Hubei ChenYuan Special Auto Co., LTD</b></p> <p>Foton Brand mobile food truck<br/>Overall dimensions(mm): 4730×1780×2630<br/>Cabinet size(mm):2900×1720×1810</p> | <p><b>Hubei ChenYuan Special Auto Co., LTD</b></p> <p>CHERRY Brand mobile food truck<br/>Overall dimensions(mm): 4730×1780×2630<br/>Cabinet size(mm):2900×1720×1810</p> | <p><b>Hubei ChenYuan Special Auto Co., LTD</b></p> <p>CHANGAN Brand mobile food truck<br/>Overall dimensions(mm): 4730×1780×2630<br/>Cabinet size(mm):2900×1720×1810</p>      |
|  <p>More</p>   |  <p>More</p>  |  <p>More</p>  |
| <p><b>Hubei ChenYuan Special Auto Co., LTD</b></p> <p>IVECO Brand mobile food truck<br/>Overall dimensions(mm): 5995×2370×3200<br/>Cabinet size(mm):3650×2120×1960</p> | <p><b>Hubei ChenYuan Special Auto Co., LTD</b></p> <p>FOOD TRAILER<br/>Overall dimensions(mm): 5630×2130×2500</p>   | <p><b>Hubei ChenYuan Special Auto Co., LTD</b></p> <p>DONGFENG Brand mobile food truck<br/>Overall dimensions(mm): 5995 × 2090 × 3300<br/>Cabinet size(mm):4200×1800×1850</p> |













**1. Q: How long is the warranty period?**

A: All of our trucks have one year warranty or 25000KM since you get the truck.

**2. Q: What's the main market of your company?**

A: We have customers all over the world and our main market is Africa, all the individuals and units are my partners who have a demand of China's high quality automobile industry product.

**3. Q: How much the production capacity and supply capacity of your factory for one year?**

A: This depends on your needs. 10 years of spare parts sales experience makes us have a smooth supply channels.

**4. Q: Where is your factory located?**

A: Our company is located in Suizhou City, Hubei Province, the Capital of Special Purpose Vehicle in China. Warmly welcome to our factory.

**5. Q: The reason why you chose our company?**

A: We have the abundant resources supply, professional quality inspection engineers, excellent service team, we will integrate all resources for your needs, let you experience the more cost-effective and more convenient "one-stop" procurement services, effectively reduce the purchasing cost.





## OUR MARKET





## CLIENTS INVISTING



## CONTACT US



Tel:+86 722 3229822



Mobile:++86 18808666258



Email: [steven@chinacyalestruck.com](mailto:steven@chinacyalestruck.com)



Skype:Truck\_chengli



Whatsap:+86 18808666258



Web: [www.chinacysalestruck.com](http://www.chinacysalestruck.com)

**Steven.wang**



if you want to know me,  
please use your phone to  
scan above QR code