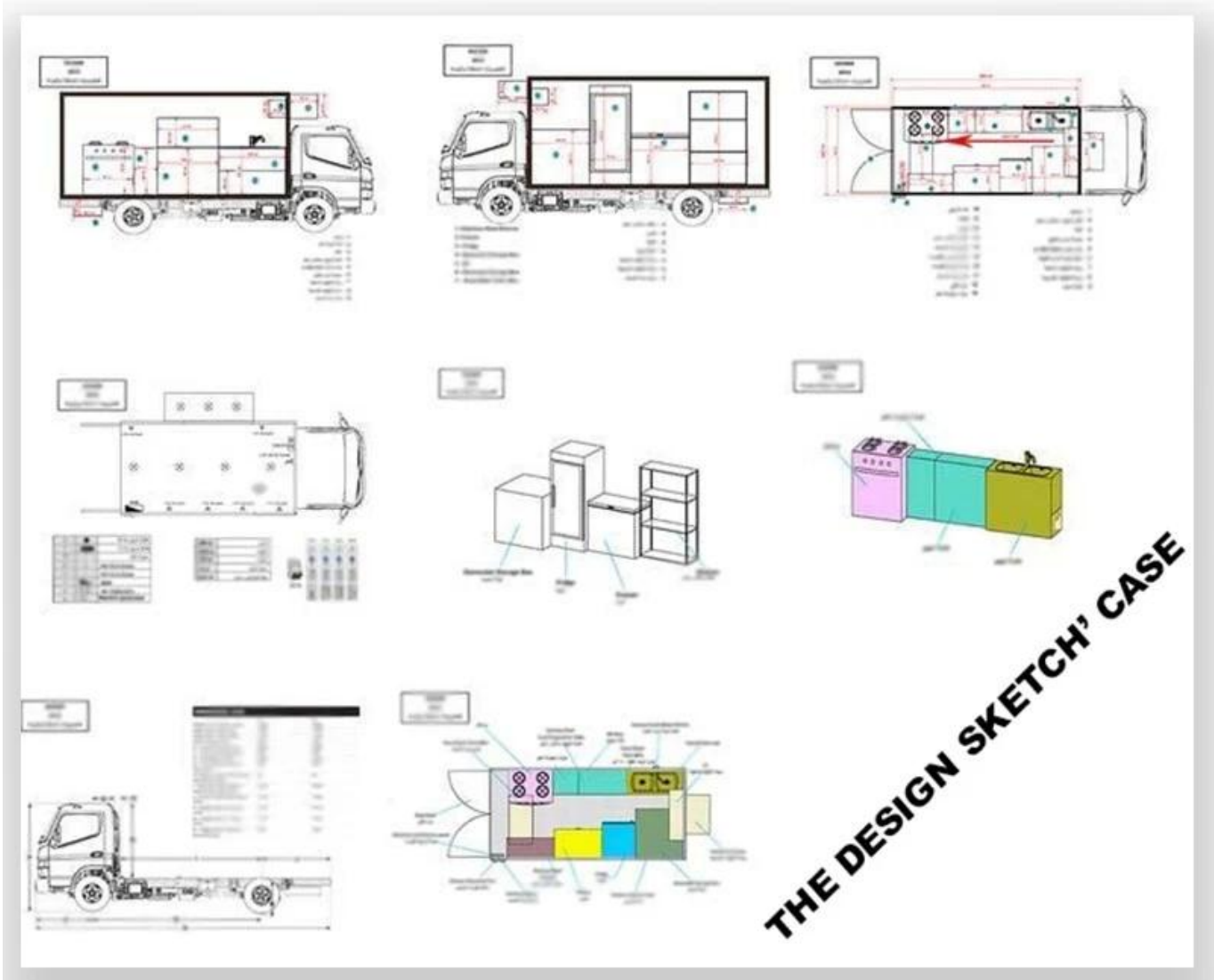


Main Specification

Model		N11044CFCZ
Dimensions (mm)	6995x2370x3200	
Weight (kg)	4480	
Max Power (kW)	4285	
Max Torque (Nm)	3310	
Max Speed (km/h)	20/8	
Engine		
Model		N11044CFCZ
Configuration		VECO
Drive		4x2 LHD
Transmission		11V
Capacity (mm)		
1		6.50R16LT
2		
3		5.7T
4		1.30
5		SCFM8140.43E4
6		140
7		2798
8		320N.m
9		1800
10		
11		
12		
13		
14		
15		
16		
17		
18		
19		
20		
21		
22		
23		
24		
25		
26		
27		
28		
29		
30		
31		
32		
33		
34		
35		
36		
37		
38		
39		
40		
41		
42		
43		
44		
45		
46		
47		
48		
49		
50		
51		
52		
53		
54		
55		
56		
57		
58		
59		
60		
61		
62		
63		
64		
65		
66		
67		
68		
69		
70		
71		
72		
73		
74		
75		
76		
77		
78		
79		
80		
81		
82		
83		
84		
85		
86		
87		
88		
89		
90		
91		
92		
93		
94		
95		
96		
97		
98		
99		
100		
101		
102		
103		
104		
105		
106		
107		
108		
109		
110		
111		
112		
113		
114		
115		
116		
117		
118		
119		
120		
121		
122		
123		
124		
125		
126		
127		
128		
129		
130		
131		
132		
133		
134		
135		
136		
137		
138		
139		
140		
141		
142		
143		
144		
145		
146		
147		
148		
149		
150		
151		
152		
153		
154		
155		
156		
157		
158		
159		
160		
161		
162		
163		
164		
165		
166		
167		
168		
169		
170		
171		
172		
173		
174		
175		
176		
177		
178		
179		
180		
181		
182		
183		
184		
185		
186		
187		
188		
189		
190		
191		
192		
193		
194		
195		
196		
197		
198		
199		
200		
201		
202		
203		
204		
205		
206		
207		
208		
209		
210		
211		
212		
213		
214		
215		
216		
217		
218		
219		
220		
221		
222		
223		
224		
225		
226		
227		
228		
229		
230		
231		
232		
233		
234		
235		
236		
237		
238		
239		
240		
241		
242		
243		
244		
245		
246		
247		
248		
249		
250		
251		
252		
253		
254		
255		
256		
257		
258		
259		
260		
261		
262		
263		
264		
265		
266		
267		
268		
269		
270		
271		
272		
273		
274		
275		
276		
277		
278		
279		
280		
281		
282		
283		
284		
285		
286		
287		
288		
289		
290		
291		
292		
293		
294		
295		
296		
297		
298		
299		
300		
301		
302		
303		
304		
305		
306		
307		
308		
309		
310		
311		
312		
313		
314		
315		
316		
317		
318		
319		
320		
321		
322		
323		
324		
325		
326		
327		
328		
329		
330		
331		
332		
333		
334		
335		
336		
337		
338		
339		
340		
341		
342		
343		
344		
345		
346		
347		
348		
349		
350		
351		
352		
353		
354		
355		
356		
357		
358		
359		
360		
361		
362		
363		
364		
365		
366		
367		
368		
369		
370		
371		
372		
373		
374		
375		
376		
377		
378		
379		
380		
381		
382		
383		
384		
385		
386		
387		
388		
389		
390		
391		
392		
393		
394		
395		
396		
397		
398		
399		
400		
401		
402		
403		
404		
405		
406		
407		
408		
409		
410		
411		
412		
413		
414		
415		
416		
417		
418		
419		
420		
421		
422		
423		
424		
425		
426		
427		
428		
429		
430		
431		
432		
433		
434		
435		
436		
437		
438		
439		
440		
441		
442		
443		
444		
445		
446		
447		
448		
449		
450		
451		
452		
453		
454		
455		
456		
457		
458		
459		
460		
461		





OTHER'S TYPE



More

Hubei ChenYuan Special Auto Co., LTD

Foton Brand mobile food truck
Overall dimensions(mm): 4730*1780*2630
Cabinet size(mm):2900*1720*1810



More

Hubei ChenYuan Special Auto Co., LTD

CHERRY Brand mobile food truck
Overall dimensions(mm): 4730*1780*2630
Cabinet size(mm):2900*1720*1810



More

Hubei ChenYuan Special Auto Co., LTD

CHANGAN Brand mobile food truck
Overall dimensions(mm): 4730*1780*2630
Cabinet size(mm):2900*1720*1810



More

Hubei ChenYuan Special Auto Co., LTD

IVECO Brand mobile food truck
Overall dimensions(mm): 5995x2370x3200
Cabinet size(mm):3650x2120x1960



More

Hubei ChenYuan Special Auto Co., LTD

FOOD TRAILER
Overall dimensions(mm): 5630*2130*2500



More

Hubei ChenYuan Special Auto Co., LTD

DONGFENG Brand mobile food truck
Overall dimensions(mm): 5995 * 2090 * 3300
Cabinet size(mm):4200x1800x1850

FACTORY OVERVIEW



WORKSHOP DISPLAY



OUR CERTIFICATION



Why Choose Us?

1. 工厂占地面积 25000 亩
2. 工厂拥有 Afrian 生产线
3. 工厂拥有 10 条生产线
4. 工厂拥有...
5. 工厂拥有... “...”

PACKAGING & SHIPPING



OUR MARKET



CLIENTS INVISTING



CONTACT US

Steven.wang



Tel:+86 722 3229822



Mobile:++86 18808666258



Email: steven@chinacyalestruck.com



Skype:Truck_chengli



Whatsap:+86 18808666258



Web: www.chinacyalestruck.com



if you want to know me,
please use your phone to
scan above QR code