

□□□□□□□□□□□□□□□□



辰远专汽  
CHENYUAN-AUTO

[www.chinacysalestruck.com](http://www.chinacysalestruck.com)



(0086) 18808666258



[steven@chinacysalestruck.com](mailto:steven@chinacysalestruck.com)











|                     |                |              |                              |
|---------------------|----------------|--------------|------------------------------|
| □□□□□□              |                |              |                              |
| □□□□                | FONTON□□□□□□□□ | □□□□□mm□     | 7990×2490×3500               |
| □□□□□□□□*□*□□□mm□   | 4800×2300×520  | □□□□□kg□     | □7760                        |
| □□□mm□              | 4500           | □□           | 3                            |
| Appr / Dep Angle□°□ | 23□□28         | □□□□□km / h□ | 80                           |
| □□□□□□□             | 3              | □□□□□        | □□□□□□□□                     |
| □□□□□□              |                |              |                              |
| □□□□                | BJ1122V5PDB-A1 | □□□□□        | □□□□□□□□□□                   |
| □□□                 | 5□□□□1□□       | □□□□         | □□                           |
| □□□□                | LHD            | □□□□         | □□□□□                        |
| □□□□□               | 11□□10+ 9      | □□□□         | 6□□                          |
| □□□□□               | 4×2            | □□□□□        | 9.00-20 14PR□9.00R20<br>14PR |
| □□□□□□□□            |                |              |                              |
| □□□□□               | YC4E135-33     | □□□□□        | □□□□□□□□□□                   |
| □□□□                | □□□            | □□□□         | □□3                          |
| □□□ml□              | 4260           | □□□KW□       | 100□135HP□                   |
| □□□□□□              |                |              |                              |
| □□□□□               | □□             | □□□□□        | SQ6.3SK2Q                    |
| □□□□□□□kg□          | 6300□□         | □□□□□        | □□3□                         |
| □□□□□□□□m□          | 9              | □□□□□□□T.M□  | 15.75                        |
| □□□□□□m□            | 5.6□□H□□□□□□   | □□□□□□□□m□   | 11                           |
| RotationAngle□□     | ±360°□□        | □□□□         | □□□                          |
| □□                  | □□□□□□□□       |              |                              |



吊臂界面采用加强钢板，且8吨以上吊机采用U型臂，可以提高截面抗弯能力！

THE BOOM INTERFACE WITH REINFORCED STEEL PLATE, AND ABOVE 8 TONS CRANE USE U-TYPE BOOM WITH POWERFUL BENDING RESISTANCE.

液压绞车依靠碟簧和摩擦片制动，效率高且噪音低，发热量小，耐用！！

HYDRAULIC WINCH RELIES ON DISC SPRING AND FRICTION PLATE TO BRAKE, HIGH EFFICIENCY, LOW NOISE AND LOW HEAT GRNERATION;



下降过程中依靠液压平衡阀平衡重物，产品的可靠性极高！

RELYING ON HYDRAULIC BALANCE VALVE TO BALANCE HEAVY OBJECTS DURING THE DESCENDING PROCESS GREATLY IMPROVING PRODUCT RELIABILITY.

6.3吨以上吊机均采用方厢支腿，能更有效的保护油缸。

ABOUT 6.3T CRANE USE SQUARE LEGS CAN PROTECT THE CYLINDER MORE EFFECTIVELY.

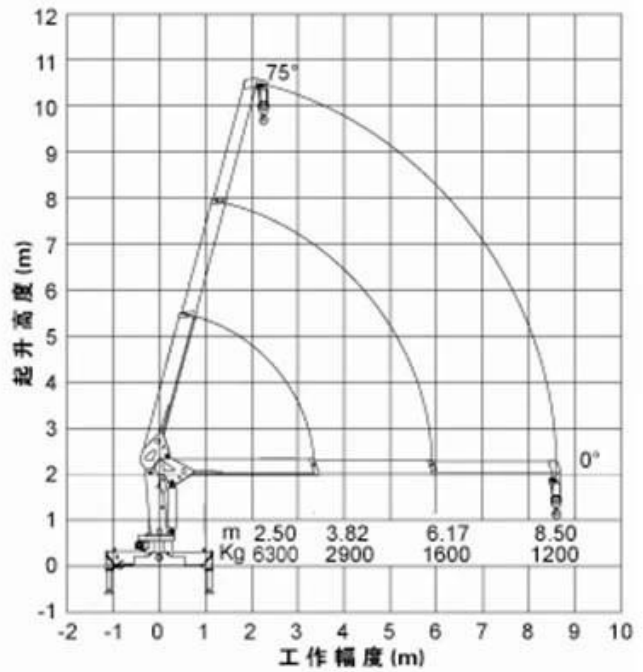
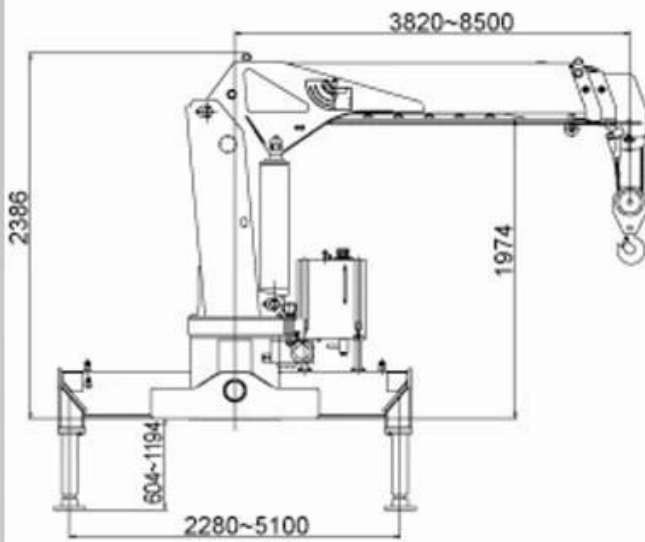
水性油漆，更加环保。

WATER-BASED PAINT, MORE ENVIRONMENTALLY FRIENDLY.



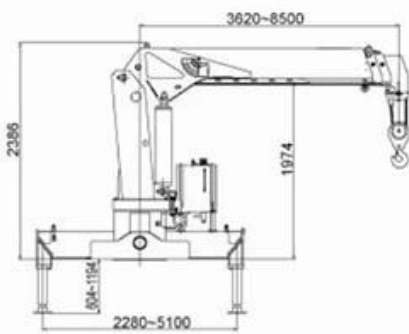
| Crane model | Max Lifting quality | Max Lifting Moment | Recommended Power | H-System Max Flow Rate | H-System Rated Pressure | Oil Tank Volume | Rotation Angle | Crane Dead Weight | Install Space |
|-------------|---------------------|--------------------|-------------------|------------------------|-------------------------|-----------------|----------------|-------------------|---------------|
| SQ6.3SK2Q   | 6300KG              | 15.7 T.M           | 20 KW             | 40 L/MIN               | 20MPA                   | 90 L            | Full Gyration  | 2117 KG           | 900 MM        |

# SQ6.3SK2Q

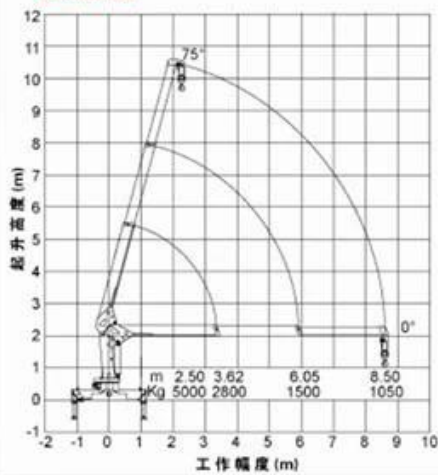




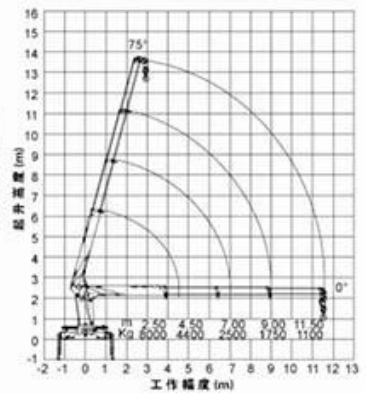
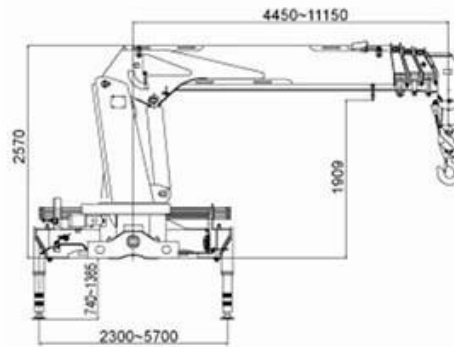
## SQ5SK2Q



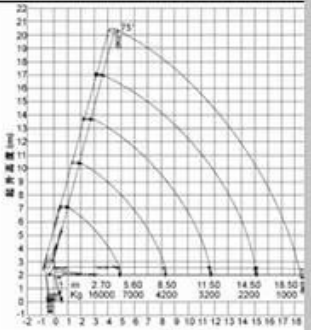
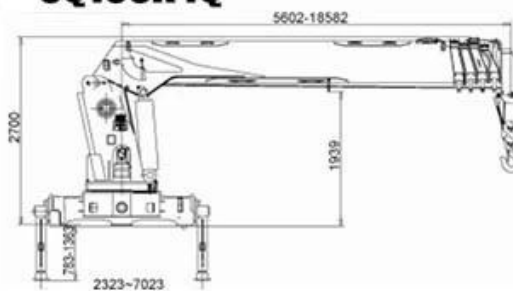
**STRAIGHT ARM WITH CRANE  
SAMPLE**



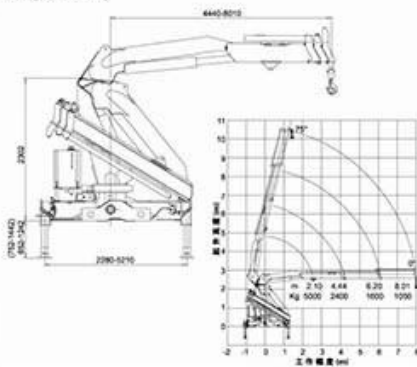
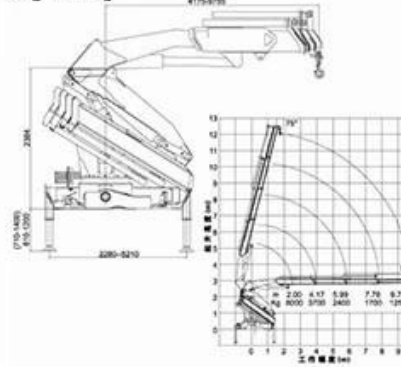
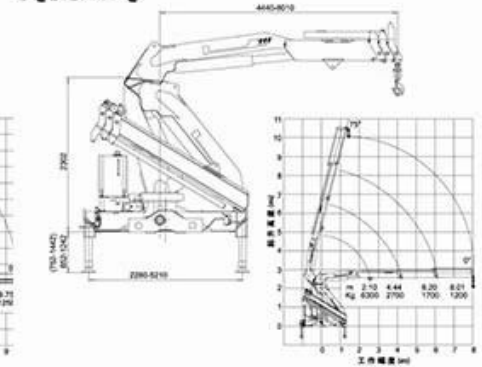
## SQ8SK3Q



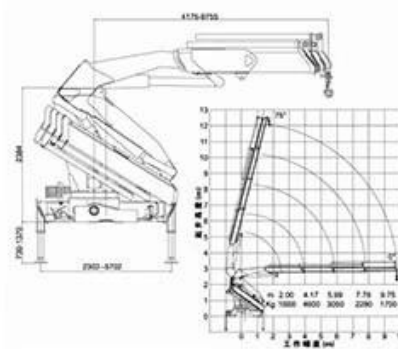
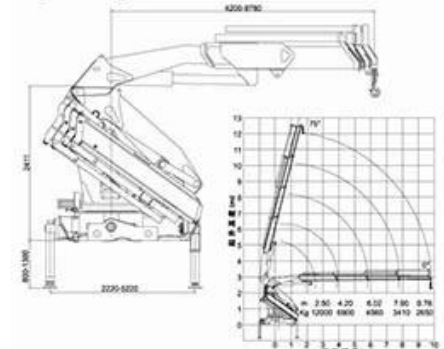
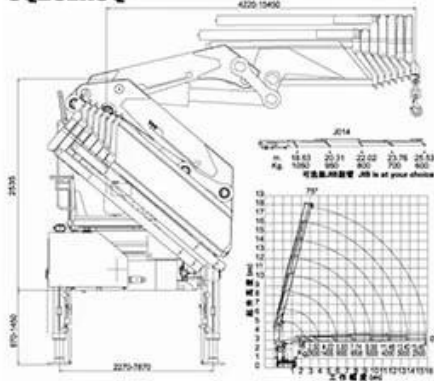
## SQ16SK4Q



As per a different requires from our customers, we will recommend a suitable type as referring in the selected truck, about the crane weight, we have many chooses, such as Straight arm: SQ2SK1Q/ SQ2SK2Q/SQ3.2SK1Q/SQ3.2SK2Q/SQ4SK3Q/SQ5SK2Q/SQ5SK3Q/SQ6.3SK3Q /SQ8SK3Q/SQ10SK3Q/SQ12SK3Q/SQ14SK4Q/SQ16SK5Q/SQ25SK2Q and so on.

**SQ5ZK2Q****SQ8ZK3Q****SQ6.3ZK2Q**

**FOLDING ARM WITH CRANE  
SAMPLE**

**SQ10ZK3Q****SQ12ZK3Q****SQ25ZK6Q**

As per a different requires from our customers, we will recommend a suitable type as referring in the selected truck, about the crane weight, we have many chooses, such as Folding arm: **SQ5ZK2Q/ SQ5ZK3Q/ SQ6.3ZK2Q/ SQ6.3ZK3Q/ SQ8ZK3Q/ SQ10ZK3Q/ SQ12ZK3Q/ SQ14ZK3Q/ SQ16ZK4Q/ SQ25ZK6Q** and so on.





REMOTE CONTROL



BASKET



TOP SEAT



AUGER DRILL



REAR OUTRIGGER



MOMENT LIMITED VALVE



GRAPPLE



GRAPPLE



GRAPPLE



FACTORY OVERVIEW





WORKSHOP DISPLAY





OUR CERTIFICATION



Why Choose Us?

1. 工厂占地面积 25000 亩
  2. 工厂拥有 Afrian 生产线
  3. 工厂拥有 10 条生产线
  4. 工厂拥有 10 条生产线
  5. 工厂拥有 10 条生产线
- “ ”

PACKAGING & SHIPPING





## OUR MARKET



CLIENTS INVISTING



CONTACT US



**Steven.wang**



Tel:+86 722 3229822



Mobile:++86 18808666258



Email: [steven@chinacyalestruck.com](mailto:steven@chinacyalestruck.com)



Skype:Truck\_chengli



Whatsap:+86 18808666258



Web: [www.chinacyalestruck.com](http://www.chinacyalestruck.com)



if you want to know me,  
please use your phone to  
scan above QR code